



## NXL-00P5

### 0-10V DIMMING EXPANSION PANEL

## OVERVIEW

The NexLight® NXL-00P5 is a Dimming Expansion Accessory Panel that allows for the easy addition of 0-10V Dimming Channels to the NexLight Lighting Control System. The small enclosure can easily be mounted in the controlled space or wherever additional 0-10V channels are required. The use of 0-10V for Correlated Color Temperature (CCT) can be achieved by using the 0-10V Control provided in this solution. There is no transformer for control power, the only control power required is supplied by the NexLight 2-Wire Data Bus. The NXL-00P5 provides up to 8 Channels of 0-10V Sinking for either CCT or Dimming applications. This panel includes a Surface Mount NEMA/Type 1 Enclosure with a flat cover secured by screws.

## FEATURES

- **(8) 0-10V Control Channels (100mA Sinking Current per Channel)**
- **Use with R Series, D Series, or a Custom Panel**
- **Expanded Capacity of the NexLight System using a “building block” solution**
- **Physical High and Low trim level potentiometers to accommodate final adjustment**

## SPECIFICATIONS

### Physical

NEMA/Type:	1
Mounting:	Surface Mount
Operating Temperature:	14° to 113°F (-10°C to 45°C)

### Electrical (Control Wiring)

Input Signal:	24VAC, Class II
---------------	-----------------

### Dimming Channels

0-10V Sinking Current:	100 mA per dimming channel
Transmission Frequency:	9.6 kHz ± 0.2 kHz
High Trim:	100% down to 50%
Low Trim:	0% up to 50%

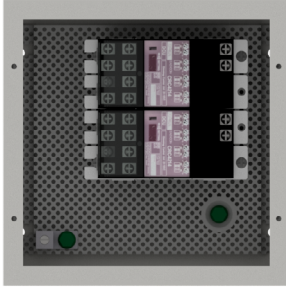
## ADDITIONAL PANELS

\*\*See individual accessory specification sheet for more information

NXL-R Series	NexLight R Series Relay Panels
NXL-D Series	NexLight D Series Dimming Panels
NXL-RC Series	NexLight RC Series Room Control Panels
NXL-OPC:	Outdoor Photocell Integration Panel, Remote Mounting (8”H x 8”W x 4”D)
NXL-AVI:	A/V Integration, (8) Dry Contact Inputs (8”H x 8”W x 4”D)
NXL-BMS:	BACnet Protocol Conversion Panel for Building Management System (BMS) Integration (12”H x 12”W x 6”D)
NXL-AMP:	Amplifier Panel for NexLight Data Bus, Supports an additional 485 mA of system devices (12”H x 12”W x 6”D)



## NXL-00P5



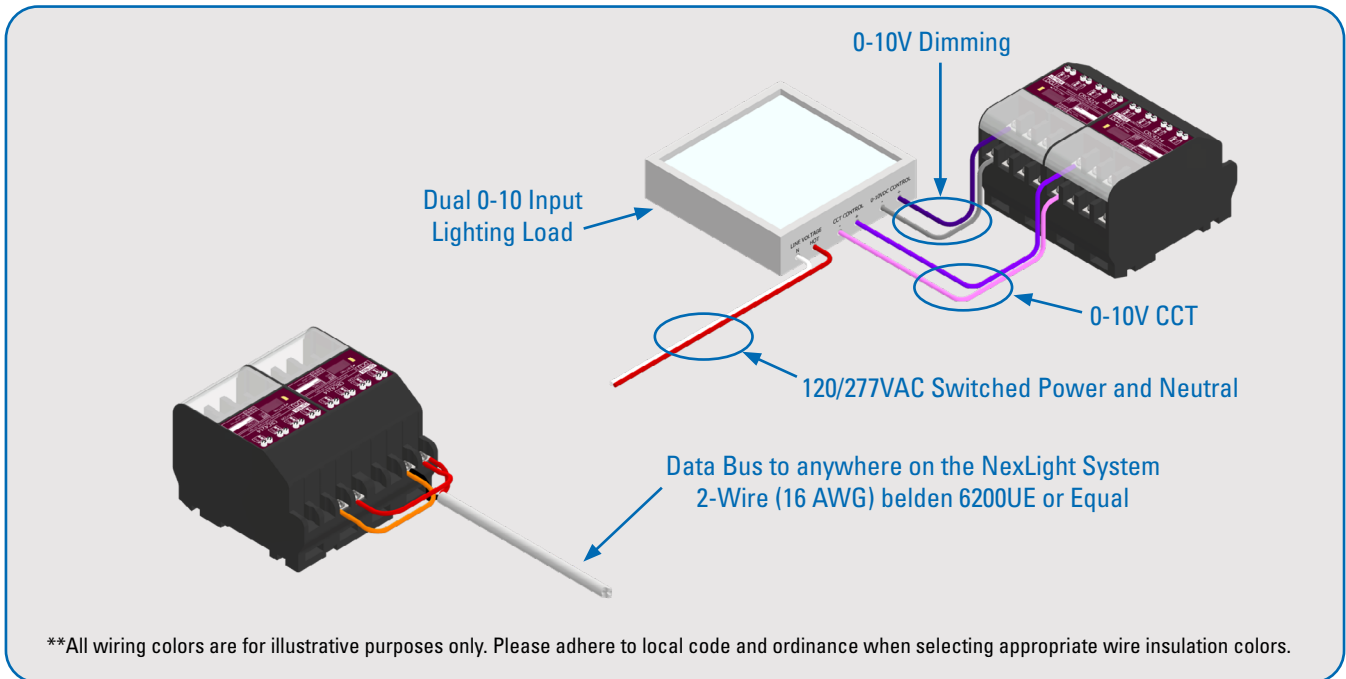
## Included Components


- 2 CRC4214 Dimming Control Units (4 Channels each)
- 1 PA-80-1 Panel Assembly

## Physical Specifications

NEMA/Type:	1
Mounting:	Surface Mount
Dimensions:	8.00"H x 8.00"W x 4.00"D
Weight:	6 lbs 6.4 oz
Addresses Available:	N/A (Requires Main Panel)
Addresses Used:	8
mA Available:	N/A (Requires Main Panel)
mA Draw:	22 mA
Operating Temperature:	14° to 113°F (-10°C to 45°C)

## WIRING DIAGRAM

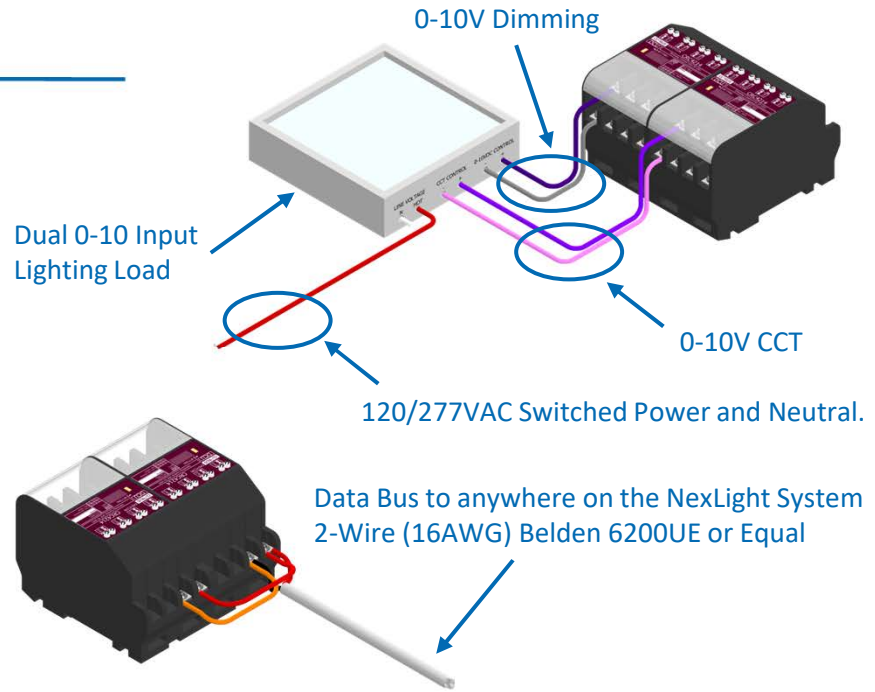
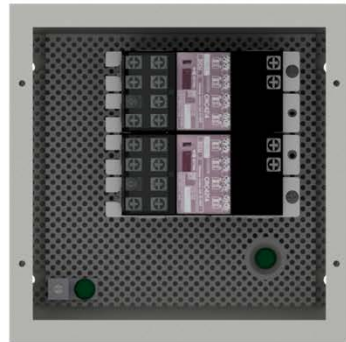


PANEL NAME:		IP ADDRESS:	N/A	
MOUNTING LOCATION:		SUBNET MASK:	N/A	
TRANSFORMER FEED:		DEFAULT GATEWAY:	N/A	
PANEL TYPE:	NXL-00P5	PANEL DIMENSIONS:	8.00"H x 8.00"W x 4.00"D	

LOAD DESCRIPTION	SOURCE	ADDRESS	DEVICE
	CHANNEL 1		-1
	CHANNEL 2		-2
	CHANNEL 3		-3
	CHANNEL 4		-4
	CHANNEL 1		-1
	CHANNEL 2		-2
	CHANNEL 3		-3
	CHANNEL 4		-4
INSTALLING CONTRACTOR TO USE: 16 AWG, BELDEN 6200 UE OR EQUAL; REFERENCE 2-WIRE DATA BUS WIRING DETAIL			

# NXL-00P5

## 0-10V EXPANSION PANEL



## APPLICATION OVERVIEW

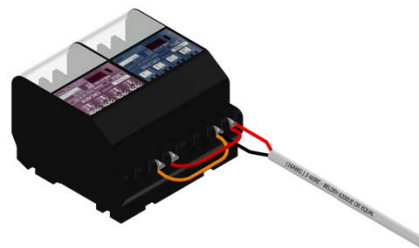
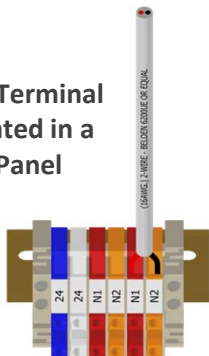
The NXL-00P5 is a Dimming Expansion Accessory Panel that allows for the easy addition of 0-10V Dimming Channels to the NexLight Lighting Control System. The small enclosure can easily be mounted in the controlled space or wherever additional 0-10V channels are required. The use of 0-10V for Correlated Color Temperature (CCT) can be achieved by using the 0-10V Control provided in this solution. There is no transformer for control power, the only control power required is supplied by the NexLight 2-Wire Data Bus. The NXL-00P5 provides up to 8 Channels of 0-10V Sinking for either CCT or Dimming applications.

## APPLICATION HIGHLIGHTS

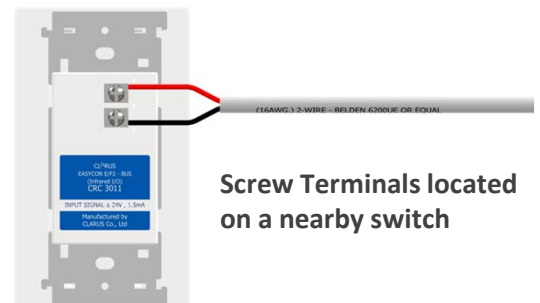
- (8) 0-10V Control Channels (100mA Sinking Current per channel).
- Use with R Series, D Series or a Custom Panel.
- Expanded Capacity of the NexLight System using a “building block” solution.
- Physical High and Low trim level potentiometers to accommodate final adjustment.

## TYPICAL DATA BUS CONNECTIONS

Data Bus Terminal Block located in a NexLight Panel



Screw Terminals located on Panel devices



Screw Terminals located on a nearby switch